

# Social-Emotional Learning for Creating Positive School Culture

Dr. Lauren Starnes



---

---

---

---

---

---

---

---



## Session Goals

- Define social-emotional learning
- Explore relevance of social-emotional learning for PreK students
- Explore outcomes of social-emotional learning for PreK students
- Consider the current cultural need for social-emotional learning

---

---

---

---

---

---

---

---



## Social-Emotional Learning: Defined



---

---

---

---

---

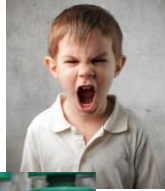
---

---

---

### Importance of Social-Emotional Learning

Mind Journey...



You tell me...

---

---

---

---

---

---

---

---

### Social-Emotional Learning in the Preschool Classroom



---

---

---

---

---

---

---

---

### Statistics

Bullying begins early. Some studies show as many as 35% of elementary students are bullied or engage in bullying.

Just shy of 20% of Kindergarten students report incidents of bullying. Students who bully others are less likely to see the behavior as wrong or be able to identify sadness and fear in others as they withdraw and struggle academically in school.

The stronger a student's social and emotional skills, the less likely the student is to bully others or be victims of bullying.

**Social-emotional learning is stronger when it begins earlier.**

---

---

---

---

---

---

---

---

# POLL



---

---

---

---

---

---

---

---

## Promoting Social-Emotional Learning in the Early Childhood Classroom

- Teach and model emotion vocabulary
  - Naturally
  - Prompted
- Respectful teacher-student interactions
  - Language
  - Interactions
- Modeling respectful language
  - Using the word “respectful”
  - Repeat and extend



---

---

---

---

---

---

---

---

## Promoting Social-Emotional Learning in the Early Childhood Classroom

- Modeling and guiding peer interactions
  - Replay social interactions
  - Use emotion vocabulary
- Practice social behaviors in play-based activities
  - Guided play
- Social-Emotional Learning programs
- Inspect what we expect

---

---

---

---

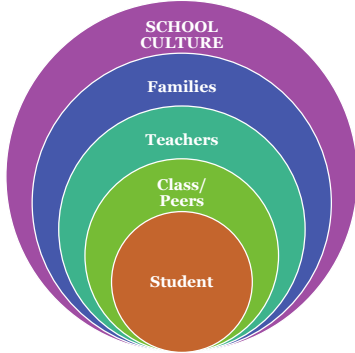
---

---

---

---

Social-Emotional Learning Effects




---

---

---

---

---

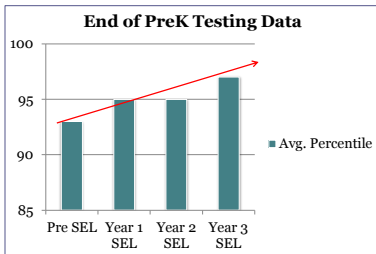
---

---

---

Social-Emotional Learning Effects: Student

- Academic achievement
  - End of PreK testing score increase




---

---

---

---

---

---

---

---

Social-Emotional Learning Effects: Student

- Academic achievement
  - Students who had SEL programs in PreK continued to outperform other students in end of Kindergarten testing
  - Early effects, lasting effects




---

---

---

---

---

---

---

---

### Social-Emotional Learning Effects: Student

- Improved classroom behavior
  - Fewer behavior reports sent home
- Longer attention spans
  - Circle time less disrupted
  - Classroom activities reflect higher engagement
- Stronger diverse social interactions
  - Less cliquy friendships



---

---

---

---

---

---

---

---

### Social-Emotional Learning Effects: Class

- Fewer peer conflicts needing teacher intervention
  - Peer problem solving
- Greater collaboration
  - Peer questioning before teacher questioning
- Fewer emotional outbursts
  - Less tears
  - Less tantrums



---

---

---

---

---

---

---

---

### Social-Emotional Learning Effects: Teachers

- Less time spent managing problem behavior
- Less time spent navigating peer conflict
- Higher feelings of parental support
- Less turnover due to job dissatisfaction



---

---

---

---

---

---

---

---

### Social-Emotional Learning Effects: Families

- Greater participation in school events
- Stronger perception of school leadership
- Stronger perception of school vision
- Higher rates of parent support/volunteers
- Higher rates of parent referrals



---

---

---

---

---

---

---

---

### Social-Emotional Learning Effect: Mental Tour



---

---

---

---

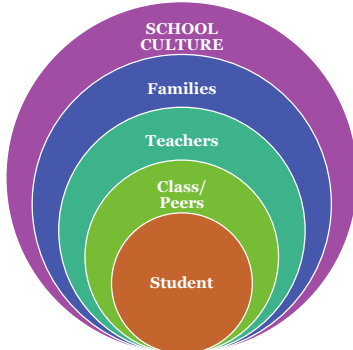
---

---

---

---

### Social-Emotional Learning Effects



---

---

---

---

---

---

---

---

# POLL



---

---

---

---

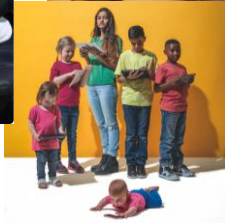
---

---

---

---

## Current Reality



---

---

---

---

---

---

---

---

## Contact Information

Dr. Lauren Starnes  
Director of Early Childhood Education  
Nobel Learning Communities, Inc.  
[Lauren.Starnes@nlcinc.com](mailto:Lauren.Starnes@nlcinc.com)



---

---

---

---

---

---

---

---