

# Your Leadership Role in Pushing the Boundaries



Laura Henry

# Hello!



- 30 years' experience within Early Childhood Education
- Range of roles: head, regulator, lecturer, advisor writer, trainer and consultant

# Including:

- National representative for England for the World Forum in Early Care and Education
- Founder and CEO - National Early Years Trainers and Consultants Organisation
- Vice-principal of Early Education
- More importantly, mum to two grown-up sons!

# Mission statement



- Local and national legislation and guidance
- Philosophical and theoretical practice
- Passion

# USP

Parents buy in

Benefits to  
parents



# Poll question:

**Do Your staff buy into your values?**

- **Yes**
- **No**

# Standards



Staff knowing this:

- Recruitment
- Induction
- Continuous personal and professional development

<http://www.laurahenryconsultancy.com/books-and-resources/training-and-more/>



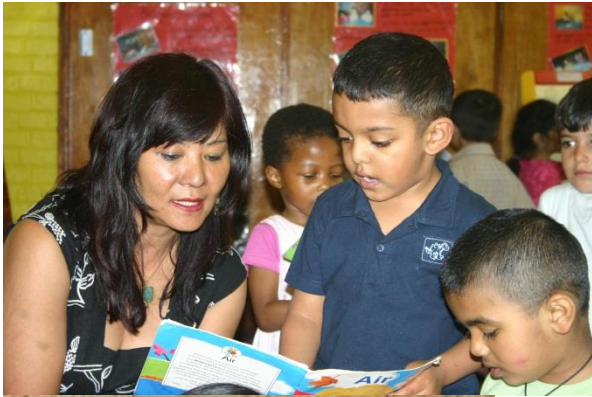
# Leadership vs Management



- Inspiring
- Makes a difference
- Strategic
- Vision
- Integrity



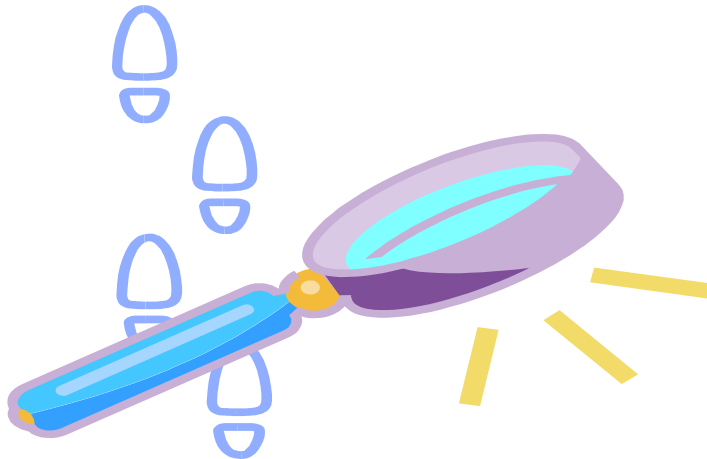
# Voice of the child



- Involving and consulting with children
- Child's voice matters in a quality setting

<http://finkcards.com/products/confident-talkers>

# Reflection & evaluation



- Self-evaluation
- Reflective practice

# Audit systems



## Measuring:

- Unique experience of the child
- Relationships between child, educators and parents
- Emotional and enabling environment
- Teaching & learning

# Include:

- Convey a clear picture of how well the setting is doing
- Provide proof of how you know what you know
- Show what you are doing to build on successes and remedy areas of improvement



# Reflections

- What has had an impact on you?
- Think about trying out some of the ideas in your practice, or finding out some more about some of the key things we have discussed.



# Free template

evaluative...



<http://www.scribd.com/doc/214615169/Descriptive-v-Evaluative>

# Bookshelf

A to Z of inspiring Early Years  
Paragraphs ~ Laura Henry

<http://www.amazon.co.uk/Inspiring-Early-Years-Paragraphs/dp/1492859125>

Archfield House  
Bristol







## @EYTalking on Twitter

Join in #EYTalking every Tuesday between 8pm and 9pm for national and international news, stories, research, blogs, documents and guidance via Twitter

# Thank You!!!



@LauraChildcare

- [laura@laurahenryconsultancy.com](mailto:laura@laurahenryconsultancy.com)
- [www.laurahenryconsultancy.com](http://www.laurahenryconsultancy.com)
- (020) 8689 7733